

# WEGELE MOWERS





## CONTENTS

WARRANTY.....	PAGE 2
MOWER OPERATION.....	PAGE 3
SERVICE AND ADJUSTMENTS...	PAGE 3-5
ENGINE.....	PAGE 3
HYDROSTAT.....	PAGE 4
BELTS.....	PAGE 4
BLADE.....	PAGE 5
PARTS.....	PAGE 6-10
WIRING DIAGRAM.....	PAGE 11
WARRANTY CLAIM FORM.....	PAGE 12

# WEGELE MOWERS

You have just purchased the finest heavy duty mower on the market. The Wegele is designed to cut anything from fine grass to big, tough weeds. Designed with simplicity in mind, it is easy to run and to maintain. Here are a few things you should know:

## **SAFETY FIRST:**

**NEVER MAKE ADJUSTMENTS OR WORK ON THE MOWER WITH THE ENGINE RUNNING**

**ALWAYS DISCONNECT SPARK PLUG WIRE BEFORE WORKING ON MOWER**

**NEVER OPERATE MOWER WITH ANY SHIELD OR GUARD REMOVED**

**DO NOT CARRY PASSENGERS**

**ALWAYS WAIT FOR THE BLADE TO STOP BEFORE DISMOUNTING**

**CHECK AREA TO BE MOWED FOR FOREIGN OBJECTS AND REMOVE THEM**

Please take the time to read this manual and the other ones that came with the mower. Also fill out the warranty registration card and return to the factory.

The following pages contain a maintenance and service guide, also a parts manual. *When ordering parts be sure to know the size of your mower, the motor serial number and the motor specification number, these are located near the air cleaner on the motor.* The mower serial number is located above the ignition switch, see picture on page 4. If your dealer does not have the parts you need, you may order from the factory by calling 800-728-9944.

## **Warranty: Applies to the original purchaser, is nontransferable.**

The mower deck is warranted for five (5) years from date of purchase against flaws or defects in material or workmanship. Our warranty does not cover the motor, hydrostat, differential, battery, clutch or tires. These are covered by the respective manufacture, as follows:

Motor: Limited three (3) year, see motor owners manual, by Briggs & Stratton.

Hydrostat: limited one (1) year from date of purchase.

Clutch: Limited one (1) year by Warner Electric.

Battery: Prorated by manufacture.

Differential: Ninety (90) days, by the manufacture.

All other parts are warranted for one (1) year from date of purchase, against breakage due to normal usage.

**How to handle warranty claims** on all parts, including motor, hydrostat, clutch, battery, differential, etc.

Fill out the enclosed warranty claim sheet, located at the rear of the manual, and return it to the factory, along with the defective part. ***All parts must be returned to the factory with freight prepaid.***

All claims must be approved by the factory.

A warranty card must be on file at the factory before any claims can be made, so fill out your warranty card and send it in.

## **Mower Operation:**

**Always check the oil level before starting engine.**

Before starting the mower for the first time, become familiar with the controls. Your right foot operates the hydro foot pedal, pushing on the top of the pedal will move the mower forward, pushing on the bottom moves the mower backward. The harder you push on the pedal, the faster you go. When you remove your foot from the pedal, the pedal returns to the neutral position and the mower stops. Your left foot is used to activate the lift pedal, which enables the operator to temporarily raise the cutting deck. The ignition, clutch switch, throttle and choke is located to the left of the seat in the belt guard.

### **To start the mower:**

The blade switch must be in the off position before the engine will start. After starting the engine and allowing it to warm up, engage blade at a fast idle, then open the throttle and proceed to mow. This mower is equipped with seat safety switch that will stop the engine if you leave the seat while mowing, if this happens, place the blade switch in the off position and restart the engine.

## **SERVICE AND ADJUSTMENTS**

### **Engine:**

The engine should be cleaned with an air gun on a regular basis. The use of water is not recommended as it will cause the dirt to stick to the fins, causing the engine to over heat.

### **Air filter and precleaner:**

In dirty conditions, clean and oil precleaner on a daily basis and replace air filter every 100 hours or as needed.

### **Engine Oil:**

Briggs & Stratton recommends the use of 30w oil in the Vanguard engines, the engine oil should be changed every 100 hours of operation, and the oil filter at least every 200 hours, if not more often. See engine manual for details.

## **Hydrostat:**

The unit should be kept clean, this helps the cooling of the unit, *but be careful in using a high pressure washer, this can force water into the reservoir and cause internal problems*, also never operate unit without the cooling fan installed.

**To place hydrostat in neutral position:** On the back of the hydrostat is a red lever, with the lever in the back position, the mower may be moved around without the engine running. The normal position is the forward, in this position the mower will move when the foot pedal is activated. *The lever must be in the extreme forward position when operating the mower, otherwise damage may occur to the hydrostat unit.* **For safety reasons never try to move the lever with the engine running as this could result in personal injury.**

**Hydrostat oil:** There are two rings on the plastic reservoir on top of the unit. The bottom line is the cold oil level, the top is the hot oil level. If oil is needed, **use 30 wt motor oil, do not use a multi-viscosity oil.** The oil should be changed every 100 hours or once a season.

**To change the hydrostat oil:** Clean all dirt and grease from the unit and the reservoir. Remove the hex-head plug from the bottom of the unit and remove the reservoir by turning it clockwise. After the oil has drained, replace the hex-headed plug. Fill with clean 30 wt motor oil to the bottom of the threads of the reservoir. Replace reservoir, fill to the cold level line, check oil level after one hour of running. The filter screen in the bottom of the reservoir is very important, all warranty is void if removed.

**To adjust the foot pedal:** The reach rod may be screwed in or out to change the position of the pedal.

**If mower creeps when foot is removed from the foot pedal:** On the bottom of the hydrostat is located two springs, on the front spring is an adjustment bolt. If the mower creeps forward, tighten the spring, if mower creeps backward, loosen the spring.

**Belt tensions:** Both belts should have, at the midpoint, approximately 3/4" deflection, damage may occur if either belt is over tightened, this in turn will void the warranty.

**To adjust the cutter hub belt:** Loosen the four bolts that hold the hub, tighten the adjustment bolt until the belt has the correct tension, tighten the hold down bolts. *When replacing the cutter hub belt, make sure that the belt is installed so that the blade turns clockwise.* The belt is installed properly when the belt leaves the cutter hub pulley on the side nearest the hydrostat and goes to the bottom of the clutch pulley, see picture on page 6.

**To adjust the hydro belt:** Loosen the cutter hub belt by loosening the four bolts that hold the cutter hub and the cutter hub adjustment bolt. Loosen the four bolts that hold the motor to the deck, and slid the motor to the rear to tighten the belt to the correct tension and tighten the motor bolts down. **Do not over tighten the hydrostat belt, this can result in damage to the hydrostat unit!** Tighten the cutter hub belt as outlined on page 4.

**Sharpening or replacing the blade:** Raise the front of the mower and block it so that it can not fall on you. The blade is held on by two 3/8"x 1 1/2", grade 2 bolts, and 1/2"x 1 1/4" bolt with spacer, remove all three. Between the blade and the shaft is the weed deflector, this keeps twine and wire from wrapping around the shaft, make sure that weed deflector is in place when you reinstall the blade. **If the blade bolts have been sheared off, or the blade has hit something, make sure to retorque the clutch bolt to 50 ft/lbs, see page 6 for location.**

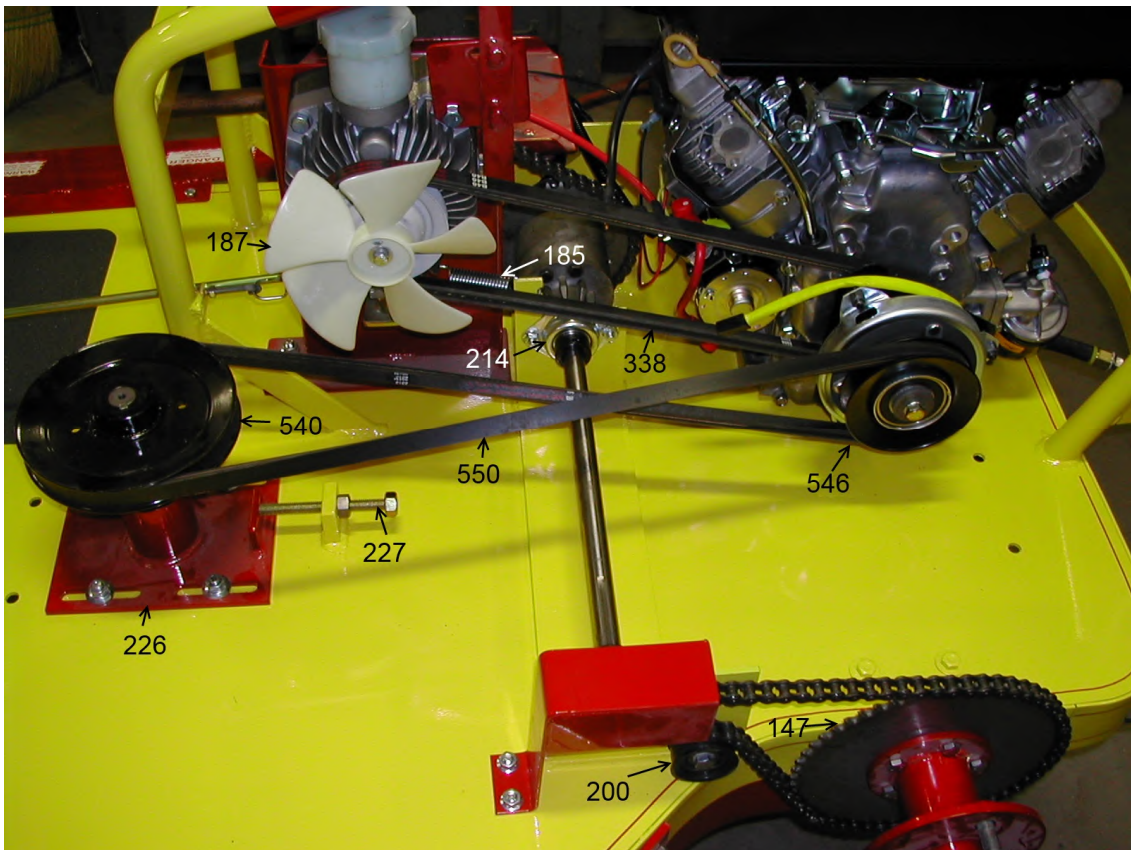
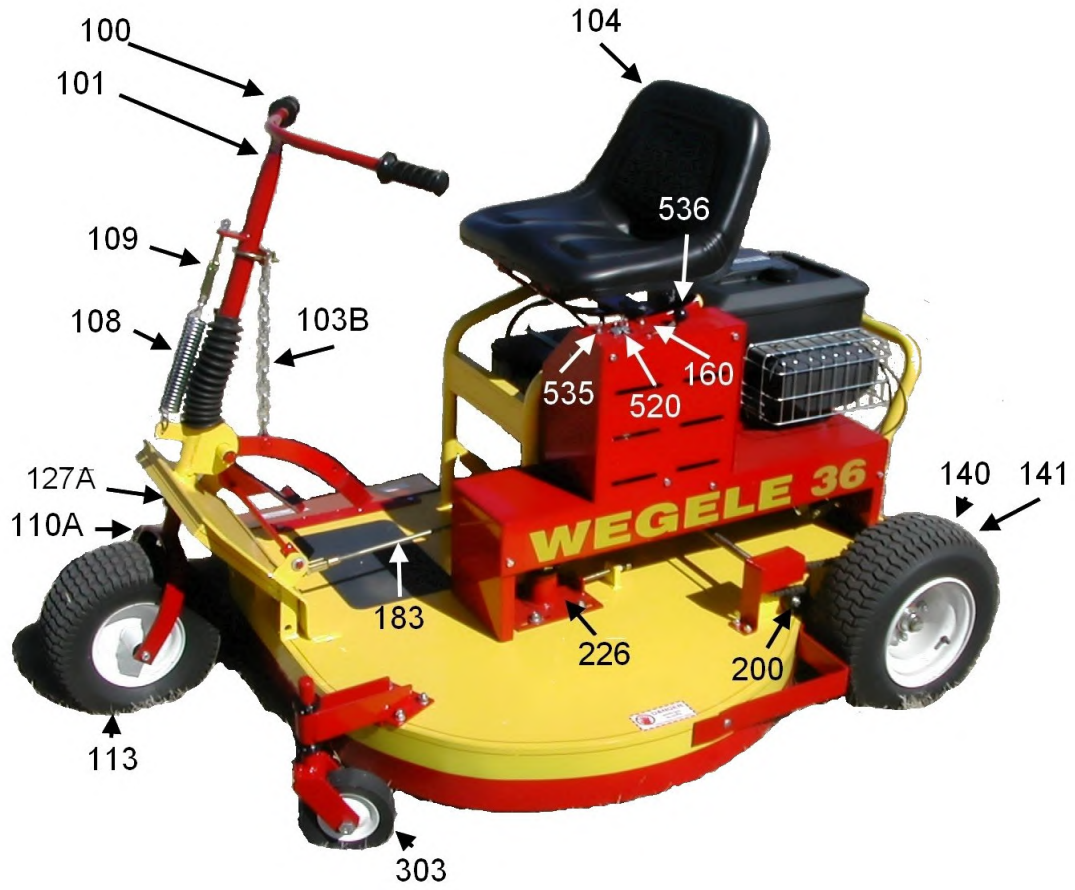
**Adjusting cutting height:** There is a locking collar (#127 on page 6) on the front wheel, slide this collar to the desired height. If you have an anti-scalp wheel installed, you may need to adjust it at this time.

**Positioning the lift pedal:** Slide the clamp on the handle bar up or down to position the lift pedal in the desired position. *Be careful not to slide the clamp to high, this will cause the cable to carry the weight of the deck and will eventually break the cable.*

**If the mower is cutting uneven side to side:** Check the air pressure in the tires, 18 PSI is recommended. If the tire pressure is okay, place the mower on level ground. ***With the engine off***, turn the blade so that it is 90 degrees to the line of travel. On one side of the blade, measure from the tip to the ground. Rotate the blade half a turn and measure from the same spot on the blade to the ground again. If there is a difference, loosen the four bolts that hold the cutter hub in place, place a shim on the two bolts that are on the side that has the shortest measurement. The shim should go between the deck and the cutter hub. Tighten the four bolts and repeat the measurements.

**Grease zerks:** There are three zerks on the mower, one on the differential that should be greased every 100 hrs, one on the front wheel hub that should be greased every 15 hrs and one on the front fork housing that should be greased every 15 hours.

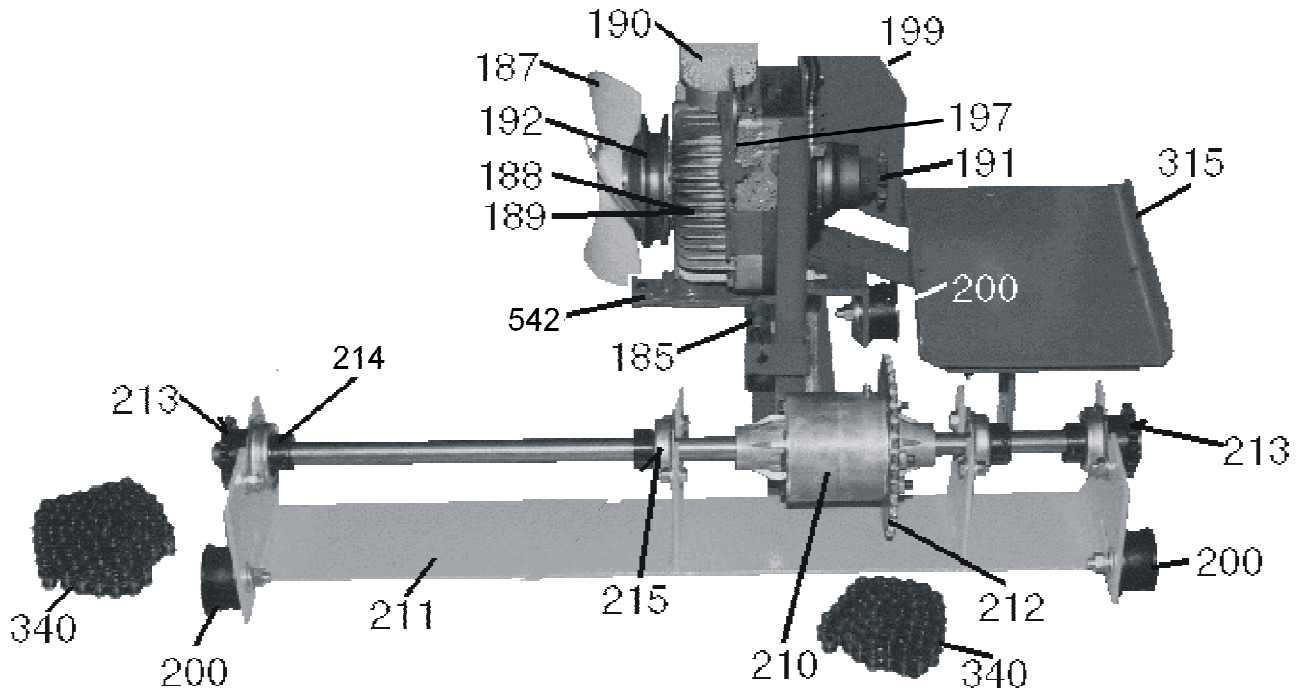
**Please remember:** **If you remove any guards or shields make sure that they are properly installed before operating the mower. Always disengage mower and wait for blade to stop before dismounting mower. Never make any adjustments or try to work on mower while engine is running. Always check area to be mowed for foreign objects before mowing. Never carry passengers.**



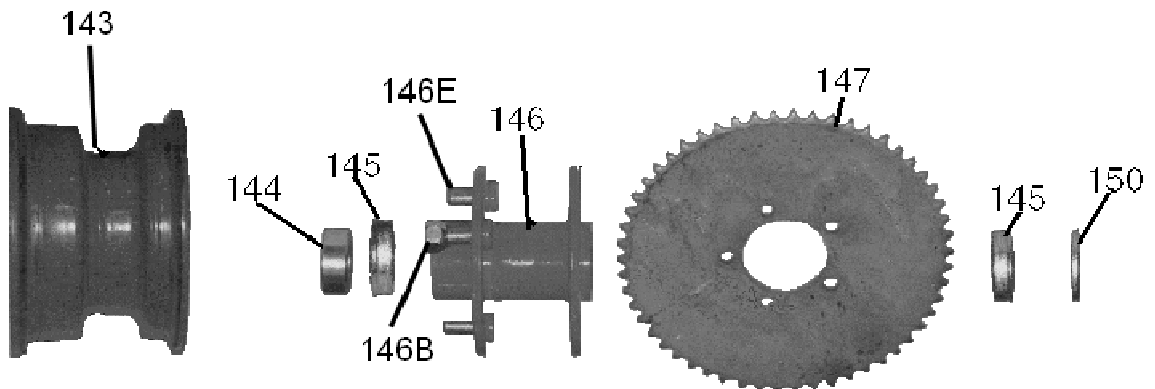


<b>Part #</b>	<b>Description</b>
100	Handle bar grip
101	Handle bar
103B	Lift chain
104	Seat
108	Lift assist spring
109	Lift assist bolt
110A	Front fork
113	13-65.0X6 tire
127A	Front adjustment collar
140	16-6.50X8 turf tread tire
141	16-6.50X8 Bar grip tire
147	Rear sprocket
160	Clutch switch
183	Reach rod
185	Hydrostat spring
187	Hydrostat fan
188	Hydrostat
200	Chain idler
210	Differential
214	Differential bearing and lock collar
226	Cutter hub
227	Cutter hub adjustment bolt
303	Anti-scalp wheel
338	Hydrostat drive belt
520	Key switch for B & S
535	Choke cable for B & S
536	Throttle cable for B & S
540	Cutter hub pulley for B & S
546	Clutch for B & S
550	Cutter hub drive belt for B & S

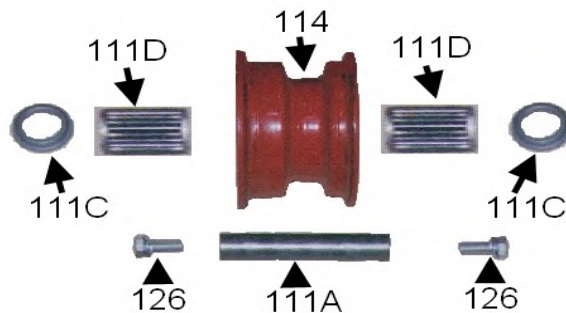
## HYDROSTAT AND DIFFERENTIAL



## REAR HUB ASSEMBLY

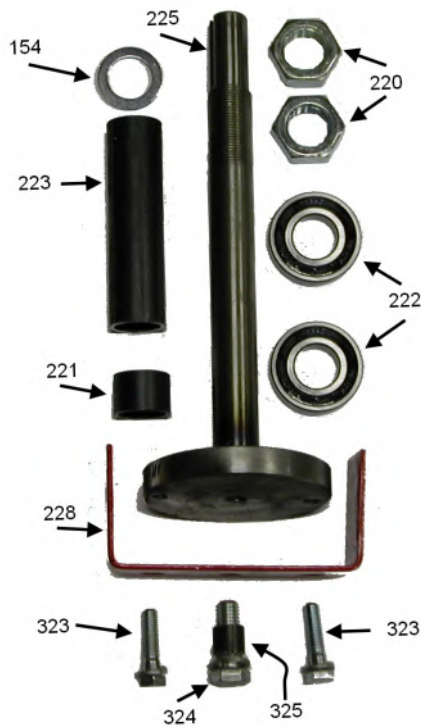


## FRONT WHEEL ASSEMBLY

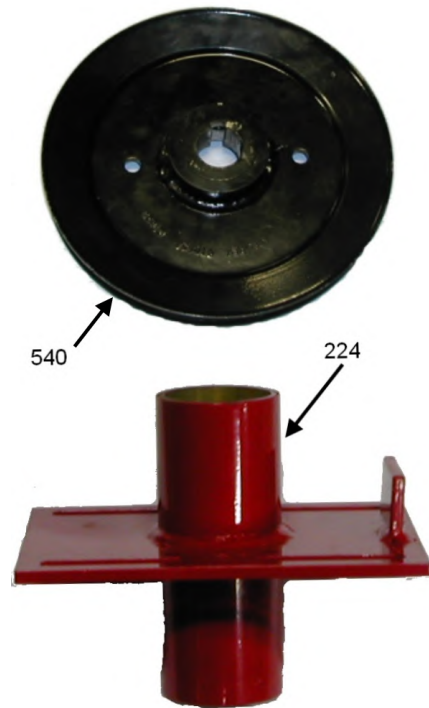


<b>Part #</b>	<b>Description</b>
111A	3/4" Front axle
111C	3/4" Interior dust cap
111D	3/4" caged bearing
114	13-6.50X6 Front wheel
126	3/8X1 bolt
143	16-6.50X8 Rear wheel
144	Locking collar
145	Rear wheel bearing
146	Hub
146B	Lug nut
146E	Wheel bolt
147	Drive sprocket, 54 tooth
150	Machine bushings, specify 10, 14, 16 gauge
185	Hydrostat spring
187	Hydrostat fan
188	Hydrostat
189	We can rebuild your hydrostat
190	Hydrostat reservoir
191	10 t hydrostat sprocket
192	Hydrostat input pulley
197	Hydrostat lock out lever
199	Hydrostat stand
200	Chain idler
210	Differential
211	Differential base
212	36 t differential sprocket
213	14 t differential sprocket
214	Differential bearing
215	Bearing flange
315	Battery box
340	#40 roller chain, hydrostat 30.5", wheel drive chain 39.5"
542	Short shift arm for B & S

## CUTTER HUB SHAFT



## CUTTER HUB



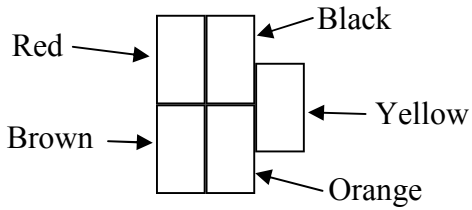
## FILTERS OIL, FUEL ADDITIVE



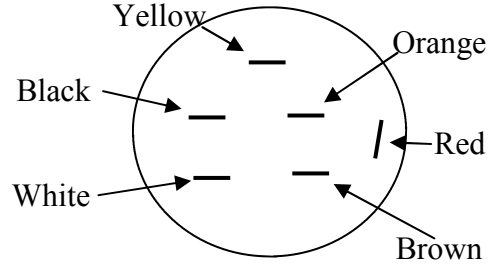
Part #	Description
154	Machine washer, 10 ga.
220	Jam nut
221	Short spacer
222	Cutter hub bearing
223	Long spacer
224	Cutter hub shell
225	Cutter hub shaft
226	Cutter hub assembly, includes 154 thru 225
228	Weed deflector
323	3/8" X 1 1/2" USS bolt, grade 2
324	1/2" X 1 1/2" USS bolt
325	Blade spacer
500	Air filter
501	Precleaner
510	Oil filter
511	Oil, one per oil change
512	Fuel additive, 1 per 2.5 gals

# WIRING DIAGRAM

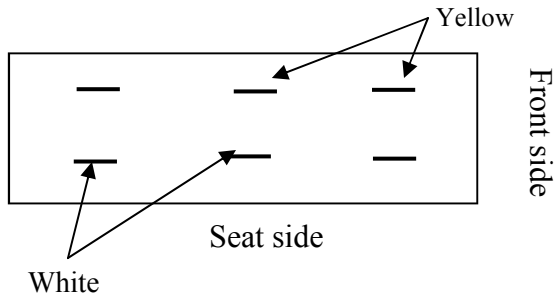
Harness from engine to belt guard,  
wire side



Back side of ignition switch



Clutch switch



Yellow wire: Solenoid activator wire  
 Black wire: Kill wire  
 White wire: Blade clutch activator wire  
 Brown wire: Ground wire  
 Red wire: Charging system activator wire  
 Orange wire: Hot wire from battery, this has a 30 amp  
 ATO/ATC fuse located below the dipstick, near the  
 starter

Grainfield Supply, Inc.  
PO Box 169  
4649 Hwy 40  
Grainfield, KS 67737  
Ph: 785 673 4321 Fax: 785 673 4314

---

WARRANTY CLAIM

Owner's name \_\_\_\_\_ Phone number \_\_\_\_\_

Address \_\_\_\_\_ City \_\_\_\_\_, State \_\_\_\_\_, Zip \_\_\_\_\_

Mower purchased from: \_\_\_\_\_ Date purchased \_\_\_\_\_

Mower serial number: \_\_\_\_\_ Engine serial number: \_\_\_\_\_

Hours used: \_\_\_\_\_ Date of failure: \_\_\_\_\_

Describe the failure: \_\_\_\_\_

---

---

---

---

---

---

---

---

---

---

List parts that are being returned: \_\_\_\_\_

---

---

FOR FACTORY USE ONLY

Date received: \_\_\_\_\_

Evaluation: \_\_\_\_\_

---

---