

Wegele Mowers

The Wegele mower has been produced for many years, this parts manual tries to cover the last 25 years of production. If you can not find a part listed, please call and we will help you. We will update the price sheets as needed, but the prices are subject to change without notice.

The first 9 pages are pictures and descriptions of the most common parts of the mower.

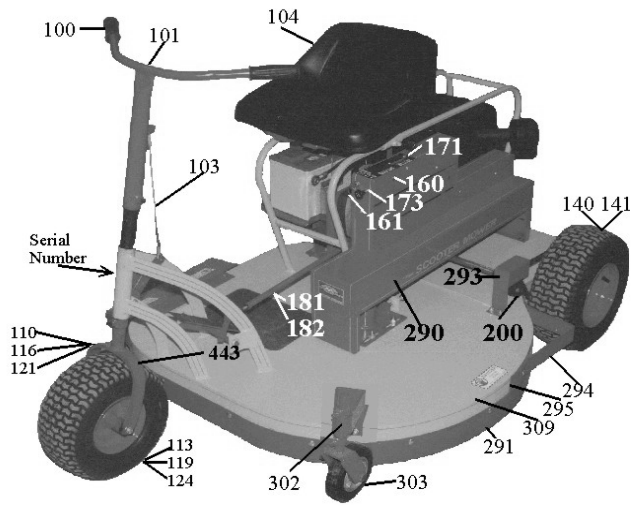
Pages 10 thru 16 are a complete parts list organized by groups, electrical, front end, etc. We have tried to give a complete description of the parts and what they fit. You will notice that some parts fit several different models while others will only fit a specific model.

Pages 17 and above cover adjustments, specifications, wiring diagrams, warranty claims, and copies of the warranty policy of Kohler.

When you order parts, make sure that you know the size of the mower, (24", 30" or 36"), hydrostat or manual transmission, one or two wheel drive, size and make of the motor and if the mower has an electric clutch or throw out lever.

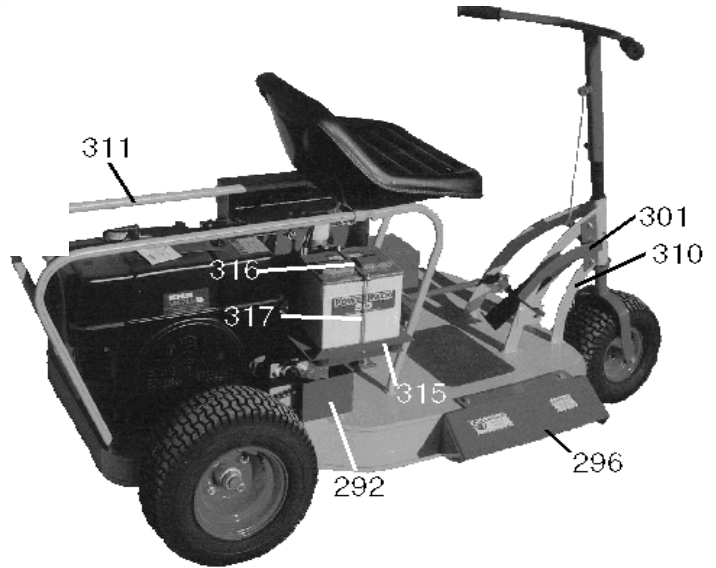
If you are ordering engine parts, we need the size and make of the motor, the specification number and the serial number of the motor. These are usually found on a decal near the carburetor.

If you have any questions, please call 800-728-9944, and we will help you.

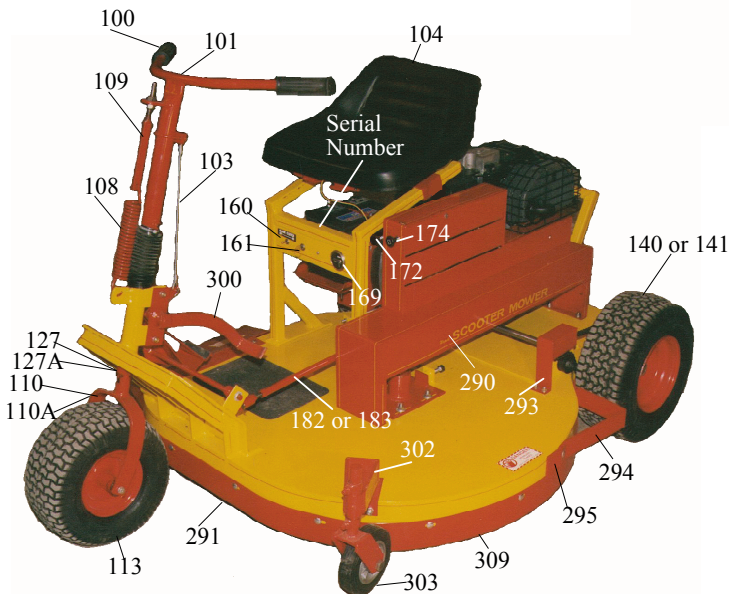
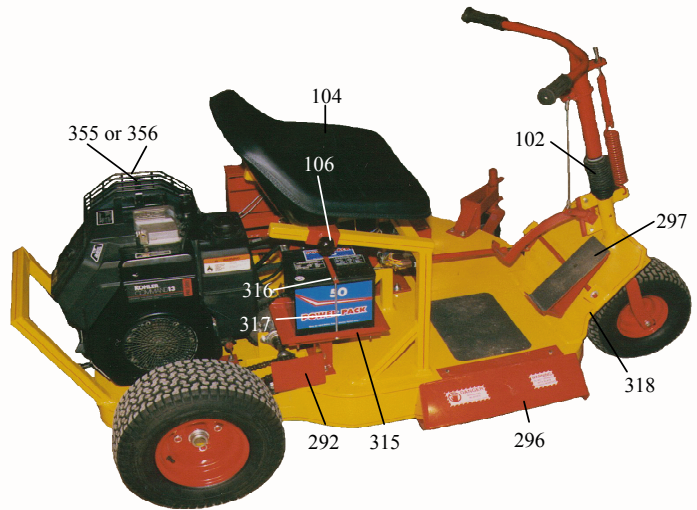


KM MODEL

A lift assist kit, #107, a seat spring kit, #105B and a scalp wheel, #302 are available for older mowers.



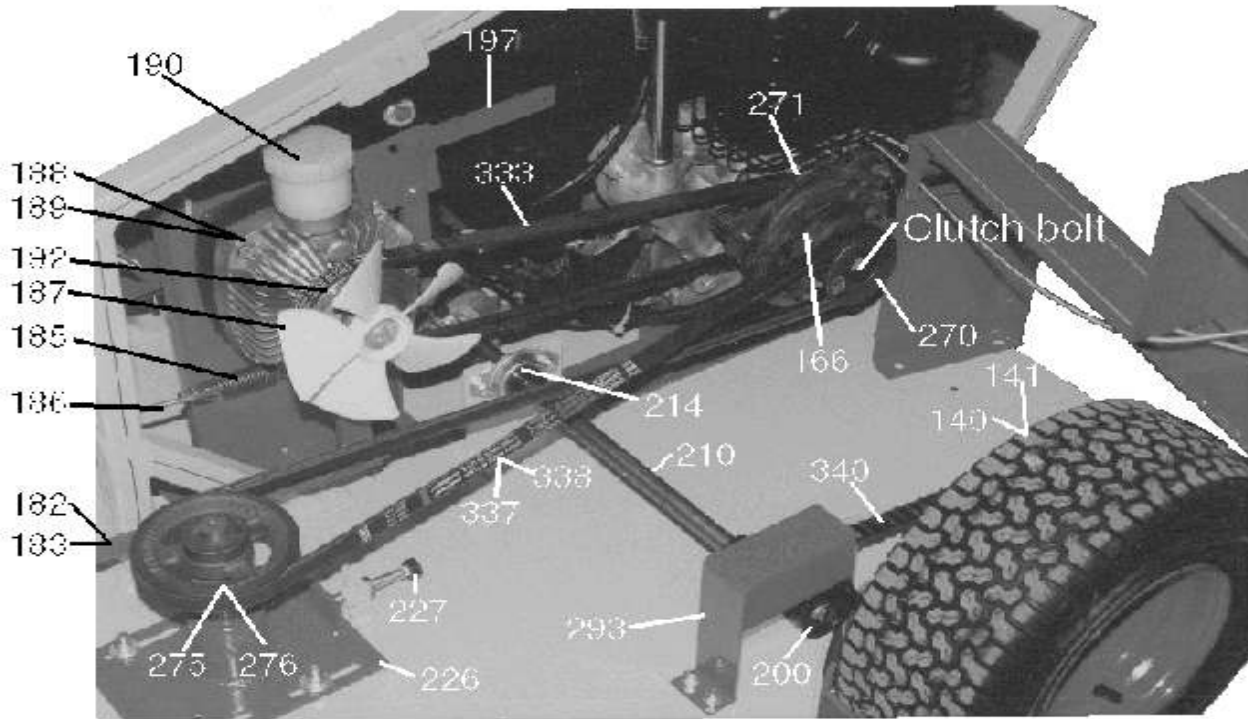
KC MODEL



KM Series		KC Series	
Item #	Description	Item #	Description
100	Handle bar grip	100	Handle bar grip
101	Handle bar	101	Handle bar
103	Lift cable	102	Boot
104	Seat, no brackets	103	Lift cable
104B	Seat with old style hinges	104	Seat, no brackets
105B	Seat spring kit	105A	Seat spring
107	Lift assist kit	105B	Seat, springs and hinges
110	Front fork for 13-650x6 tire	106	Knob
113	13-650x6 tire	108	Lift assist spring
116	Front fork for 13-500x6 tire	109	Lift assist adjustment bolt
119	13-500x6 tire	110	Front fork for 13-650x6 tire
121	Front fork for 350-410x6 tire	110A	Front fork for 13-650x6 tire, use after serial #KC30MM648 and KC36MM887
124	3.50-4.10x6 tire	113	13-650x6 tire
127	Adjustment collar	127	Adjustment collar
140	16-6.50x8 turf tread tire	127A	Adjustment collar for 110A
141	16-6.50x8 bar grip tire	140	16-6.50x8 turf tread tire
160	Clutch switch	141	16-6.50x8 bar grip tire
161	Key switch	160	Clutch switch
171	Throttle cable for KM series	161	Key switch
173	Choke cable for KM series	169	Hour meter
181	30" reach rod KM series	172	Throttle cable for KC series
182	36" KM, 30" KC reach rod	174	Choke cable for KC series
200	Flat chain idler	182	30" KC, 36" KM, reach rod
290	Belt & cutter hub guard, specify mower	183	36" KC reach rod
291	Rock guard, specify mower size	200	Flat chain idler
292	Right hand chain guard	290	Belt & cutter hub guard, specify mower
293	Left hand chain guard	291	Rock guard, specify mower size
294	Wheel guard	292	Right hand chain guard
295	Bark guard	293	Left hand chain guard
296	Discharge chute	294	Wheel guard
298	Hydro foot pedal, KM and earlier	295	Bark guard
301	Lift pedal for KM and earlier	296	Discharge chute
302	Anti-scalp wheel assembly	297	Hydro foot pedal for KC series
303	Scalp wheel	300	Lift pedal for KC series
309	Painted mower deck, specify mower	302	Anti-scalp wheel assembly
310	Goose neck	303	Scalp wheel
311	Grill Pipes	309	Painted mower deck, specify mower
315	Battery box	312	Seat stand
316	Battery hold down strap	315	Battery box
317	Battery hold down bolt, 2 used	316	Battery hold down strap
443	Wide front end conversion; includes 13-6.50x6 tire and wheel, fork, axle, axle bolts and adjustment collar	317	Battery hold down bolt, 2 used
		318	KC front end
		355	13 hp Command, w/muffler & guard
		356	15 hp Command, w/muffler & guard

KM SERIES BELTS, ETC

KC SERIES BELTS, ETC

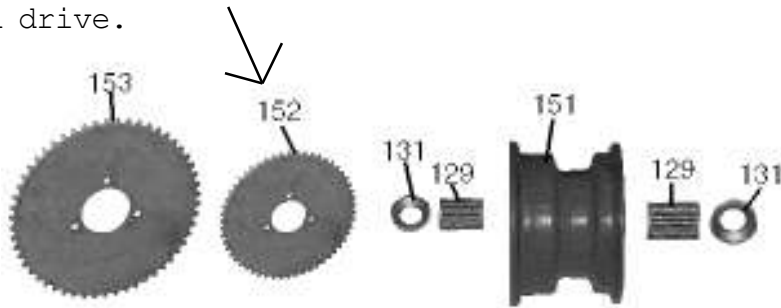


KM Series		KC Series	
Item #	Description	Item #	Description
140	16-650x8 turf tread tire	140	16-650x8 turf tread tire
141	16-650x8 bar grip tire	141	16-650x8 bar grip tire
167	Electric clutch for K and Magnum	166	Electric clutch for Command
181	30" reach rod	182	30" KC, 36" KM reach rod
182	36" KM, 30" KC reach rod	183	36" KC reach rod
185	Hydro spring, 2 used	185	Hydro spring, 2 used
186	Hydro spring adjustment bolt	186	Hydro spring adjustment bolt
187	Hydro fan	187	Hydro fan
188	Hydrostat	188	Hydrostat
190	Hydro reservoir	190	Hydro reservoir
192	Hydro input pulley	192	Hydro input pulley
196	Hydro lock out lever for K and Magnum	197	Hydro lock out lever for Command
200	Flat chain idler	200	Flat chain idler
210	Differential, Stewart	210	Differential, Stewart
214	3/4" bearing and collar	214	3/4" bearing and collar
226	Cutter hub assembly	226	Cutter hub assembly
227	Adjustment bolt	227	Adjustment bolt
270	Clutch pulley, 3.5" bolt pattern	270	Clutch pulley, 3.5" bolt pattern
272	Motor to hydro, specify 3.5" or 4"	271	Motor to hydro, 3.5" x1"b
275	30" cutter hub pulley	275	30" cutter hub pulley
276	36" cutter hub pulley	276	36" cutter hub pulley
293	Left hand chain guard	293	Left hand chain guard
332	Motor to hydro belt	333	Motor to hydro belt
336	30" motor to cutter hub belt	337	30" KC, 36"KM motor to cutter hub belt
337	KM 36", KC 30" motor to cutter hub belt	338	36" KC motor to cutter hub belt
340	Refer to chain chart	340	Refer to chain chart

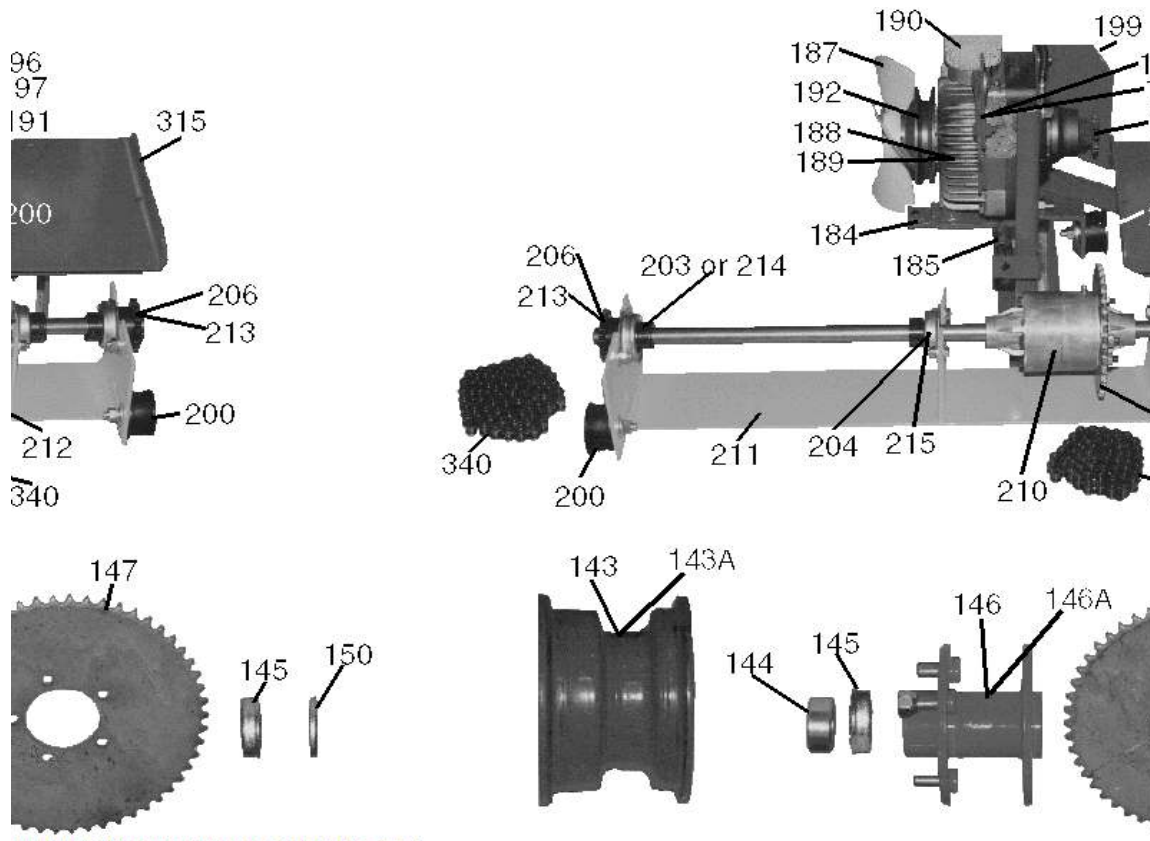
Prices subject to change without notice

HYDROSTAT ONE WHEEL DRIVE

One piece wheel and hub, used on one wheel drive and on early two wheel drive.



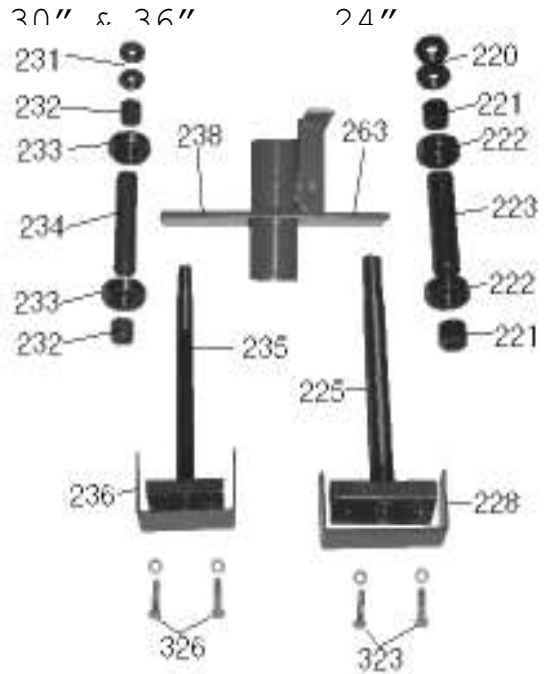
HYDROSTAT TWO WHEEL DRIVE



Hydrostat one wheel drive		Hydrostat two wheel drive	
Item	Description	Item	Description
129	1"x2" caged wheel bearing	143	Rear wheel, used from 1991 to present, use hub #146
131	External dust cap	143B	Rear wheel used from 1983 to 1991, use nub #146A
151	One peice wheel and hub	144	Locking collar for rear axle
152	54 t sprocket, specify 3 or 6 holes	145	Sealed bearing for rear hub
184	Short shift arm	146	Hub, used from 1991 to present
185	Hydro spring, 2 used	146A	Hub, used from 1983 to 1991
187	Hydro fan	147	54 t sprocket, 5 bolt
188	Hydrostat	150	Machine washers, specify 10, 14, 18 gauge
190	Hydro reservoir	152	54 t sprocket, 3 hole, used with 7/8" differentials
191	10 t hydro sprocket	184	Short shift arm
192	Hydro input pulley	185	Hydro spring, 2 used
196	Lock out lever for K and Magnum	187	Hydro fan
198	Hydro base for jackshaft	188	Hydrostat
200	Flat chain idlers	190	Hydro reservoir
202	Jack shaft for one wheel drive	191	10 t hydro sprocket
203	7/8" bearing & collar for jack shaft and early differentials	192	Hydro input pulley
205	7/8 pillar bearing and housing	196	Lock out lever for K and Magnum
206	14 t, 7/8" sprocket for jack shaft and early differentials	197	Lock out lever for Command
		199	Hydro base
		200	Flat chain idler
		203	7/8" bearing & collar for jack shaft and early differentials
		204	7/8" bearing flange
		206	14 t, 7/8" sprocket for jack shaft and early differentials
		210	Stewart differential, 3/4"
		211	Differential base, specify mower
		212	36 t sprocket
		213	14 t 3/4" sprocket
		214	3/4" bearing and collar
		215	3/4" bearing flange
		315	Battery box
		340	See chain chart, chain by the inch
Prices subject to change without notice			

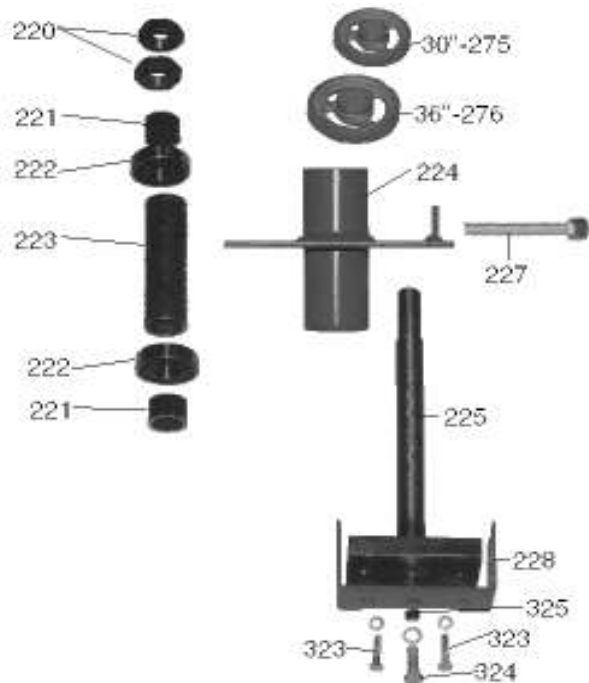
SLIDING CUTTER HUBS

Roller Bearings
 Sealed Bearings
 24"
 30" & 36"



Sliding cutter hub assembly

Stationary cutter hub



Blade numbers:

- 24"-320
- 30"-321
- 36"-322

Sliding cutter hubs			
24" Cutter hub with roller bearings		30"-36" Cutter hub with roller bearings	
Item #	Description	Item #	Description
231	Jam nuts, 2 used	220	Jam nuts, 2 used
232	Short spacer	228	Weed deflector
236	Weed deflector	249	Short spacer
240	Top seal	250	Top seal
241	Flinger	251	Roller bearing
242	Roller bearing	252	Bearing cup
243	Bearing cup	253	Grease retainer
244	Grease retainer	254	Backing ring
245	Backing ring	255	Lower seal
246	Lower seal	256	Cutter hub shaft, 30"-36"
247	Cutter hub shaft, 24"	262	Complete assembly, w/sealed brgs
24" Cutter hub with sealed bearings		30"-36" Cutter hub with sealed bearings	
Item #	Description	Item #	Description
231	Jam nuts, 2 used	220	Jam nuts, 2 used
232	Short spacer	221	Short spacer
233	Sealed bearing	222	Sealed bearing
234	Long spacer	223	Long spacer
235	Cutter hub shaft, 24"	225	Cutter hub shaft, 30"-36"
236	Weed deflector	228	Weed deflector
238	Shell and plate	263	shell and plate
326	5/16"x1 1/2" grade 2 bolt	323	3/8"x1 1/2" grade 2 bolt
Parts for sliding cutter hubs		Stationary cutter hubs	
Item #	Description	Item #	Description
100	Handle grip	220	Jam nuts, 2 used
237	Cutter hub assembly, 24"	221	Short spacer
239	Throw out lever, 24"	222	Sealed bearing
257	Throw out lever, 30"-36"	223	Long spacer
258	Adjustment joint	224	Shell and plate
259	Cutter hub hold downs, pair	225	Cutter hub shaft, 30"-36"
260	Cutter hub spacers, pair	226	Cutter hub assembly
261	Cutter hub belt carrier, specify size	227	Adjustment bolt
262	Cutter hub assembly, 30"-36"	228	Weed deflector
274	24" cutter hub pulley	275	30" cutter hub pulley
275	30" cutter hub pulley	276	36" cutter hub pulley
276	36" cutter hub pulley	323	3/8"x1 1/2" grade 2 bolt
		324	1/2"x1" bolt, used on KC series only
		325	Blade bushing for KC series
Blades			
Item #	Description		
320	24" blade		
321	30" blade		
322	36" blade		
Cutter hub assemblies do not come with hold downs, spacers, pulleys, weed deflectors, adjustment joints, blade bolts, etc.			
Prices subject to change without notice			

Item	Description	Price
REAR TIRES, HUBS, SPROCKETS		
140	16-6.50x8 turf tire	\$31.79
141	16-650x8 Bar grip tire	\$41.70
142	16-650x8 tube	\$8.02
143	16-650x8 wheel	\$34.19
143A	Turf tire & wheel, #140 & #143	\$64.46
143B	Dico wheel	\$34.46
144	Locking collar for rear axle	\$3.22
145	Sealed wheel bearing	\$7.06
146	Rear wheel hub	\$53.26
146A	Dico hub	\$52.00
147	54 tooth rear drive sprocket, 5 bolt	\$22.58
148	Rear axle, specify length and holes if needed	\$17.70
149	Rear axle clamp	\$4.89
150	Machine Bushings, specify 10, 14, or 18 gauge	\$0.54
151	One peice rear wheel, 16-6.50x8 includes bearings,dust caps	\$43.18
152	54 tooth sprocket for #151, specify 3 or 6 bolt	\$27.52
153	70 tooth sprocket, for single wheel drive	\$47.31
154	15 oz of tire sealant, installed in new tires	\$6.52
156	Exchange 2 turf treads for 2 bar grips, on a new mower	\$28.16
ELECTRICAL		
160	clutch switch,	\$12.72
161	Key switch	\$23.79
162	Ignition keys	\$1.70
163	relay	\$13.08
164	Wiring harness without relay	\$18.18
165	Wiring harness with relay	\$27.34

Item	Description	Price	
239	24" throw out lever	\$24.39	
240	Top closure, (dust seal), 24"	\$2.81	
241	24" Top and bottom flinger	\$3.15	
242	Top & bottom roller bearing for 24" cutter hub	\$12.28	
243	Bearing cup, 24"	\$5.86	
244	24" grease retainer	\$21.94	
245	24" Backing ring	\$2.24	
246	Lower cutter hub seal, 24"	\$10.81	
247	24" cutter hub shaft for roller bearings	\$36.50	
30"-36" SLIDING CUTTER HUB PARTS			
249	Short spacer for 30"-36" sliding cutter hub	\$3.17	
250	Top cutter hub seal, 30"-36"	\$7.29	
251	Cutter hub roller bearing, 30"-36"	\$8.46	
252	bearing cup, for 30"-36" cutter hub	\$5.15	
253	grease retainer 30"-36" cutter hub	\$11.72	
254	Backing ring for 30"-36" bearing cup	\$2.03	
255	Lower cutter hub seal, 30"-36"	\$7.06	
256	Sliding cutter shaft, for roller brgs, 30"-36"	\$54.72	
257	Throw out lever, 30"-36"	\$24.29	
258	cutter hub adjustment joint	\$11.92	
259	Cutter hub hold down, pair	\$14.72	
260	Cutter hub spacer, pair	\$9.67	
261	Cutter hub belt carrier, specify 24", 30" or 36"	\$10.73	
262	Sliding cutter hub assembly, 30"-36" w/sealed brgs	\$102.70	
263	30"-36" sliding cutter hub shell and plate	\$37.43	
PULLEYS			
270	Clutch pulley, 3 1/2" bolt pattern	\$39.81	

Item	Description	Price	
	30", 36" jack shaft to rear wheel-----48.5"	\$18.91	
	24", 30", 36" hydro to differential-----30.5"	\$11.90	
	24", 30", 36" differential to rear wheel-----41.5"	\$16.19	
340	Roller chain, price per inch	\$0.39	
341	1/2 link	\$1.20	
342	master link	\$1.20	
COMMAND PARTS			
350	Command air filter, comes with precleaner	\$10.95	
351	Command precleaner, no longer available		
352	Command flywheel fan	\$13.70	
353	Command flywheel screen	\$4.72	
354	Command gas cap	\$13.82	
355	13 hp command motor, w/muffler and guard	\$1,144.06	
356	15 hp Command motor, w/muffler and guard	\$1,216.45	
357	Muffler kit for 13hp Command	\$101.98	
358	Muffler kit for 15hp Command	\$101.98	
359	Muffler guard, fits both engines	\$44.84	
360	Command oil filter	\$8.99	
361	Command and Magnum solenoid	\$22.40	
362	Command starter	\$140.41	
363	Command fuel pump	\$30.53	
364	Oil drain valve	\$6.98	
MAGNUM PARTS			
380	Magnum air filter and precleaner	\$10.12	
382	flywheel fan, magnum	\$24.88	
383	bolts for mag fan	\$0.79	

SERVICE AND ADJUSTMENTS

Command Motors :

Air filter and precleaner:

In dirty conditions, clean and oil precleaner on a daily basis and replace air filter every 100 hours or as needed.

Engine Oil:

Kohler recommends the use of 10w-30w oil in the Command engines, the engine oil should be changed every 100 hours of operation, and the oil filter at least every 200 hours, if not more often.

Magnum and K series motors :

Air filter and precleaner:

In dirty conditions, clean and oil precleaner on a daily basis and replace air filter every 100 hours or as needed.

Engine oil:

Kohler recommends the use of 30wt oil in the Magnum and K series motors, the engine oil should be changed every 100 hrs of operation, if not more often.

All engines:

The engine should be cleaned with an air gun on a regular basis. There is a plug located on the flywheel side of the engine , in the top left hand corner. This plug may be removed so an air nozzle can be used to clean the engine fins. The use of water is not recommended as it will cause the dirt to stick to the fins, causing the engine to over heat.

Hydrostat:

The unit should be kept clean, this helps the cooling of the unit, *but be careful in using a high pressure washer, this can force water into the reservoir and cause internal problems*, also never operate unit without the cooling fan installed.

To place hydrostat in neutral position: On the back of the hydrostat is a red lever, with the lever in the down or the back position, (depending on which model you have) the mower may be moved around without the engine running. The normal position is the up or forward, in this position the mower will move when the foot pedal is activated. *The lever must be in the extreme up or forward position when operating the mower, otherwise damage may occur to the hydrostat unit.* **For safety reasons never try to move the lever with the engine running as this could result in personal injury.**

Hydrostat oil: There are two rings on the plastic reservoir on top of the unit. The bottom line is the cold oil level, the top is the hot oil level. If oil is needed, **use 20 wt motor oil**, do not use a multi-viscosity oil. The oil should be changed every 100 hours or once a season.

To change the hydrostat oil: Clean all dirt and grease from the unit

and the reservoir. Remove the hex-head plug from the bottom of the unit and remove the reservoir by turning it clockwise. After the oil has drained, flush the unit with clean solvent. Allow all solvent to drain out, then replace the hex-headed plug. Fill with clean 20 wt motor oil to the bottom of the threads of the reservoir. Replace reservoir, fill to the cold level line, check oil level after one hour of running. The filter in the bottom of the reservoir is very important, all warranty is void if removed.

To adjust the foot pedal: The reach rod may be screwed in or out to change the position of the pedal.

If mower creeps when foot is removed from the foot pedal: On the bottom of the hydrostat is located two springs, on the front spring is an adjustment bolt. If the mower creeps forward, loosen the spring, if mower creeps backward, tighten the spring.

Belt tensions: Both belts should have, at the midpoint, approximately 3/4" deflection, damage may occur if either belt is over tightened, this in turn will void the warranty.

To adjust the cutter hub belt: Loosen the four bolts that hold the hub, tighten the adjustment bolt until the belt has the correct tension, tighten the hold down bolts. *When replacing the cutter hub belt, make sure that the belt is installed so that the blade turns clockwise.* The belt is installed properly when the belt leaves the cutter hub pulley on the side nearest the hydrostat and goes to the bottom of the clutch pulley, see picture on page 4.

To adjust the hydro belt: Loosen the cutter hub belt by loosening the four bolts that hold the cutter hub and the cutter hub adjustment bolt. Loosen the four bolts that hold the motor to the deck, and slid the motor to the rear to tighten the belt to the correct tension and tighten the motor bolts down. **Do not over tighten the hydrostat belt, this can result in damage to the hydrostat unit!** Tighten the cutter hub belt as outlined above.

Sharpening or replacing the blade: Raise the front of the mower and block it so that it can not fall on you. The blade is held on by two 3/8"x 1 1/2", (for threaded blocks) or 3/8" x 1 3/4", (for unthreaded blocks) grade 2 bolts, and 1/2"x 1 1/4" bolt with spacer, remove all three. Between the blade and the shaft is the weed deflector, this keeps twine and wire from wrapping around the shaft, make sure that weed deflector is in place when you reinstall the blade. **If the blade bolts have been sheared off, or the blade has hit something, make sure to retorque the clutch bolt to 50 ft/lbs, see page 4 for location.**

Adjusting cutting height: There is a locking collar (#127) on the front

wheel, slide this collar to the desired height. If you have an anti-scalp wheel installed, you may need to adjust it at this time.

Positioning the lift pedal: Slide the clamp on the handle bar up or down to position the lift pedal in the desired position. *Be careful not to slide the clamp to high, this will cause the cable to carry the weight of the deck and will eventually break the cable.*

If the mower is cutting uneven side to side: Check the air pressure in the tires, 18 PSI is recommended. If the tire pressure is okay, place the mower on level ground. **With the engine off**, turn the blade so that it is 90 degrees to the line of travel. On one side of the blade, measure from the tip to the ground. Rotate the blade half a turn and measure from the same spot on the blade to the ground again. If there is a difference, loosen the four bolts that hold the cutter hub in place, place a shim on the two bolts that are on the side that has the shortest measurement. The shim should go between the deck and the cutter hub. Tighten the four bolts and repeat the measurements.

Grease zerks: There are three zerks on the newer mowers, one on the differential that should be greased every 100 hrs, one on the front wheel hub that should be greased every 15 hrs and one on the front fork housing that should be greased every 15 hours. On the older mowers, the rear wheels may have zerks on the hubs, these should be greased every 15 hrs, the cutter hub may also have a zerk that should be greased on a daily basis.

If you remove any guards or shields make sure that they are properly installed before operating the mower. Always disengage mower and wait for blade to stop before dismounting mower. Never make any adjustments or try to work on mower while engine is running. Always check area to be mowed for foreign objects before mowing. Never carry passengers.

Warranty: Applies to the original purchaser, is nontransferable. The mower deck is warranted for five years from date of purchase against flaws or defects in material or workmanship. Our warranty does not cover the motor, hydrostat, differential, battery, clutch or tires. These are covered by the respective manufacture, as follows:

Motor: Limited 2 year, see motor owners manual, by Kohler.

Hydrostat: limited 1 year from date of purchase.

Clutch: Limited 1 year by Warner Electric.

Battery: Prorated by manufacture.

Differential: 90 days, by the manufacture.

Tires: warranty by the manufacture.

All other parts are warrantied for 1 year from date of purchase, against breakage due to normal usage.

How to handle warranty claims on all parts, including motor, hydrostat, clutch, battery, differential, tires, etc.

Included in this manual are warranty claim sheets, fill them out and send